

# OLIMP DEFENSE GROUP M46



# MADE FOR THE FUTURE

---

Military boats and ships have constituted integral components of countries' defense and attack strategies for millennia. Nations have come to understand that the most vulnerable aspect within the defense navy sector is often the human element. This is why we introduce a forward-thinking solution: an autonomous vessel operated remotely to prioritize human safety. These innovative solutions epitomize the future.

**Protecting the maritime borders of the nation is of utmost significance.**

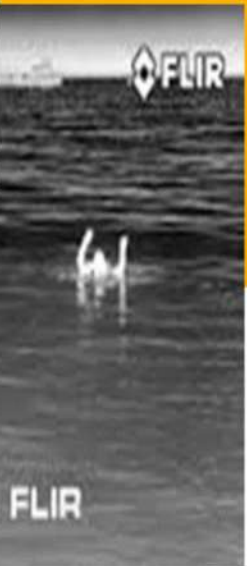
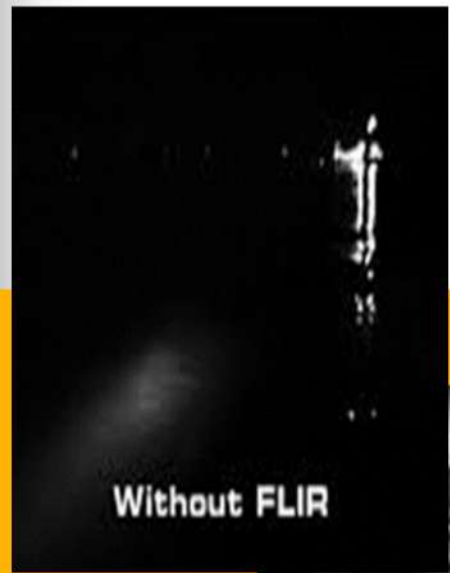




# PRIMARY USE

---

- Coastguard surveillance
- Customs patrolling
- Gathering maritime intelligence
- Swift troop deployment
- Communication infrastructure
- Aid for direct action operations
- Maritime search and rescue
- Protection of oil platforms
- Maritime control
- Assistance for diving operations
- Firearm support
- Firefighting proficiency
- Search and rescue operations



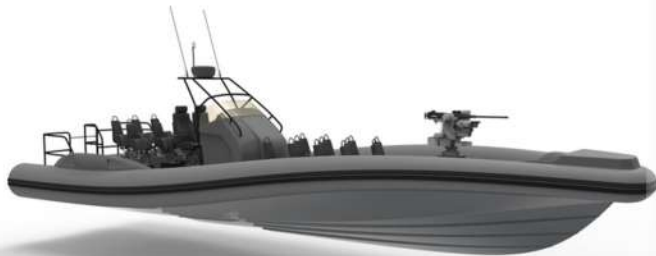
## COCKPIT

The interior and cockpit are meticulously crafted using advanced technology. The cockpit design is customized to meet customer specifications and user demands, integrating modern GPS, Mill VHF, SSB, radar systems, and thermal cameras.

# BUILT-IN MATERIALS

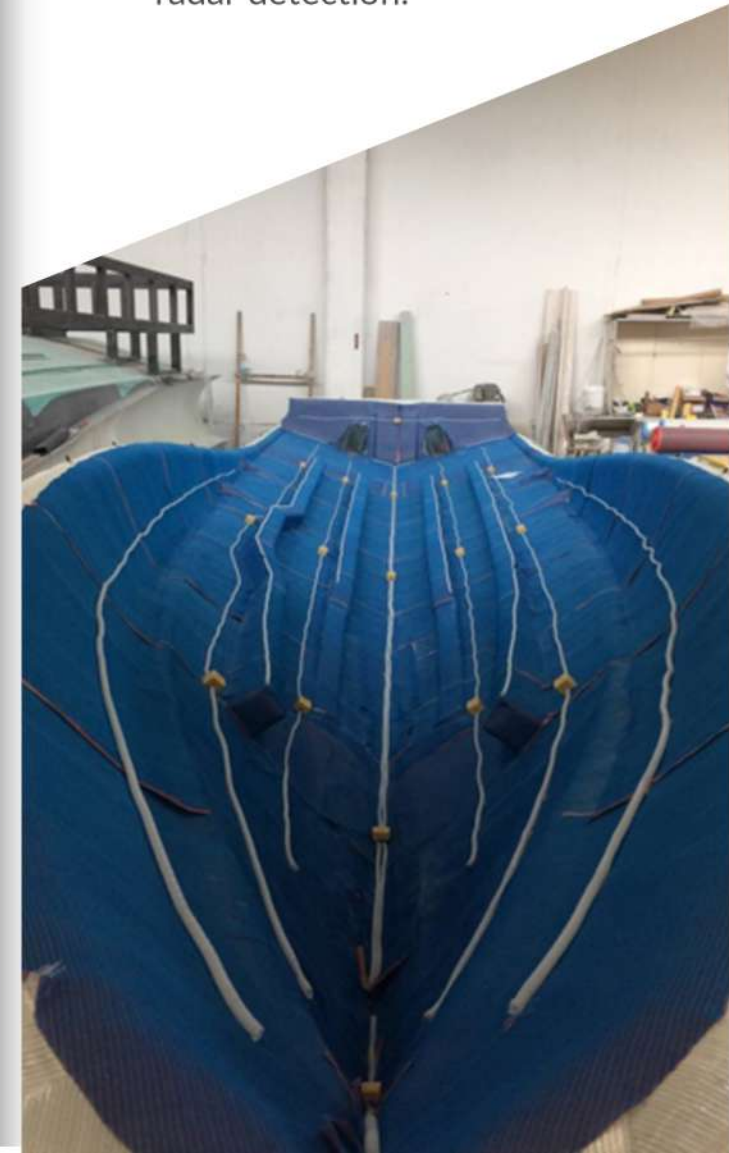
---

- The boat's hull will be crafted using cutting-edge technologies such as 3D MAX vacuum infusion, reinforced with Aramid for enhanced strength and durability.



- 
- The new technology for the unmanned vessel M46 entails constructing the deck using hard styrofoam.

- 
- M46 must possess exceptional stealth characteristics, being highly elusive to both visual and radar detection.





# M46 OPEN

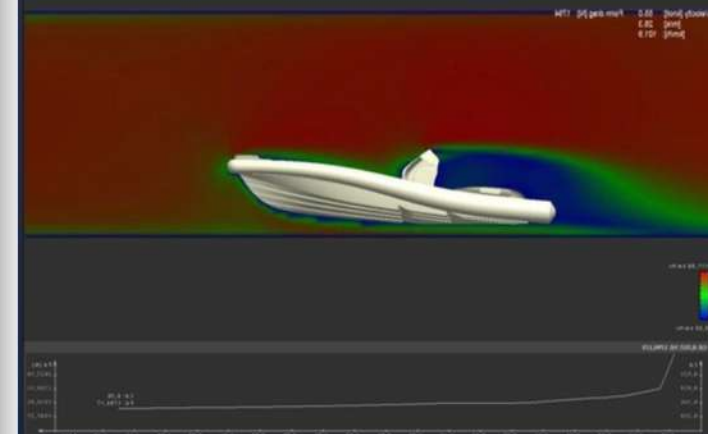


“ The optimal solution for specialized operations. ”

- Overall Length: 13.99 m – 14.75 m
- Overall Beam: 4.20 m
- Project Draft: 0.39 m
- Fuel Tank Capacity: 1000 l – 2000 l
- Displacement: 7300 kg – 9,990 kg
- Speed Range: 40 knots – 70 knots
- Carrying Capacity: 10,000 kg



## WIND RESISTANT



# M46 CABIN

---



- Overall Length: 13.99 m – 14.75m
- Overall Beam: 4.20 m
- Overall Height: 5.6 m
- Project Draft: 0.39 m
- Displacement: 7300 kg – 9,990 kg
- Fuel Tank Capacity: 1000 l – 2000 l
- Speed Range: 40 knots – 70 knots
- Carrying Capacity: 10,000 kg

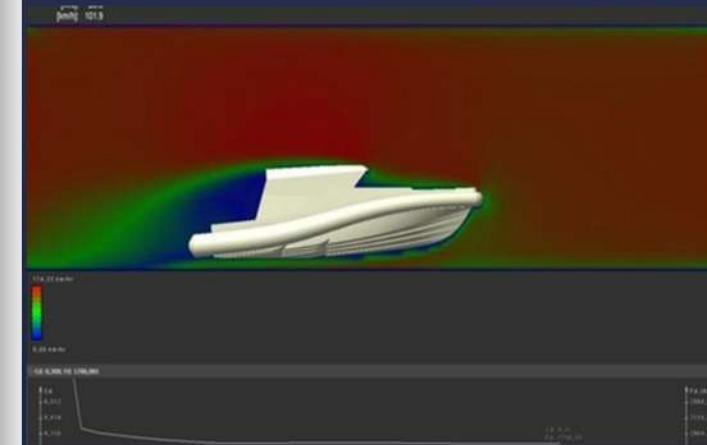


**“ M46 safeguarded the borders of the European Union, Naval bases and NATO warships. ”**



## WIND RESISTANT

---



# ENGINES

---

## OUTBOARD

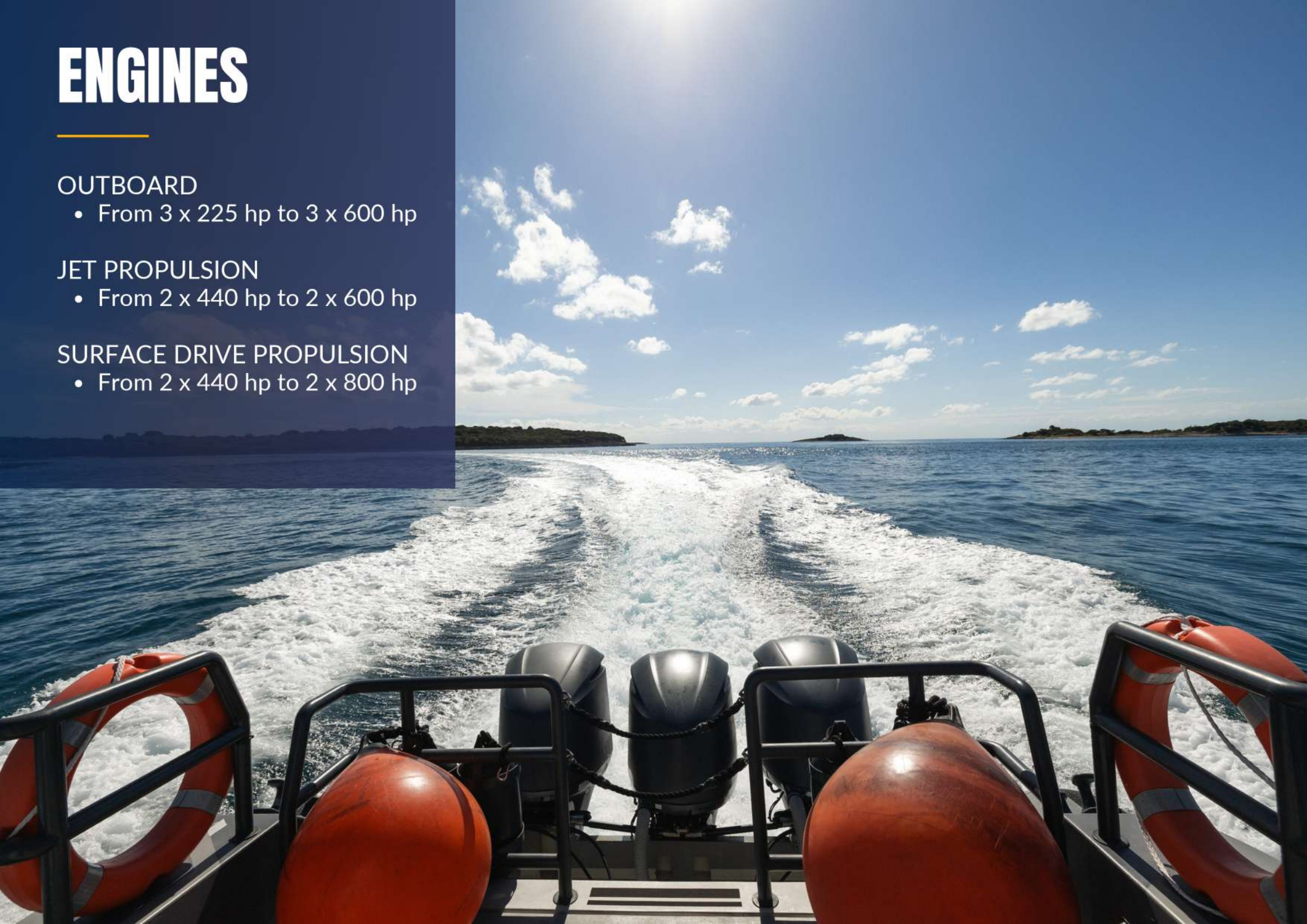
- From 3 x 225 hp to 3 x 600 hp

## JET PROPULSION

- From 2 x 440 hp to 2 x 600 hp

## SURFACE DRIVE PROPULSION

- From 2 x 440 hp to 2 x 800 hp



# INTERIOR



# ARMAMENTS

---

- Platform for Remote-controlled Weapon Stations (RWS)
- Drone carrier
- Platform for rocket launchers
- Automatic fire extinguishers
- Rapid Obscuring System
- Thermal camera with long-range night vision capabilities





**INTEGRATED TRANSPORT  
LIFT EYE SHIP TO SHIP**

# INTEGRATED TRANSPORT LIFT EYE SHIP TO SHIP



# What distinguishes OLIMP UVM46 as the premier selection?

- High speed capabilities
- Low radar visibility
- Manoeuvrability
- Full loaded
- Long range distances
- Strong gunfire support
- Unsinkable
- Operates in all sea and weather conditions
- Low maintenance costs
- Suitable for rives and lakes
- Fuel economy

